

LITHIUM SOLAR SOLUTIONS



CAPACITY RANGE
5Ah TO 400Ah



SOLAR & WIND ENERGY



3.2V-384V



ALL-PURPOSE



TELECOMMUNICATION



DATA CENTERS



TKP Series

LiFePO₄ Technology in VRLA Containers



Overview

Techkraft Power Lithium-Iron Phosphate batteries offer superb improvement in characteristics compared to lead-acid technology. Due to the extreme cycle and calendar life, LiFePO₄ batteries are an excellent long-term investment for your applications. Powerful, lightweight, safe, and smart, the Lithium-Iron Phosphate batteries are the future of the energy storage you can have right now.

Characteristics

- Capacity range: 5Ah to 400Ah
- Design life:
 - > 15 years (depending on cycles)
- Cycle life:
 - 30% DOD: 12000 cycles
 - 50% DOD: 6000 cycles
 - 80% DOD: 4500 cycles
 - 100% DOD: 3000 cycles
- Available in: 3V; 6V; 12V; 24V; 48V in VRLA type containers
- Self-discharge per month: ≤ 3% at 25°C
- Operation temperature range: 0°C to + 45°C
- Recommended operation temperature: 25°C

Design Features

- Longer cycle life – Up to 15 times longer cycle life and 5 times longer float/calendar life than lead-acid batteries.
- More capacity – Provides up to 100% of usable energy.
- Lightweight – 60% lighter than lead-acid batteries.
- High discharge rate – Ability to fully discharge the battery at a high rate of discharge.
- Fast charging – Charges much faster than conventional sealed lead-acid batteries.
- Long cycle life – More than 3000 cycles at 100% depth of discharge.
- Intelligent BMS – The battery management system monitors and adapts to battery conditions to maximize performance and safety.

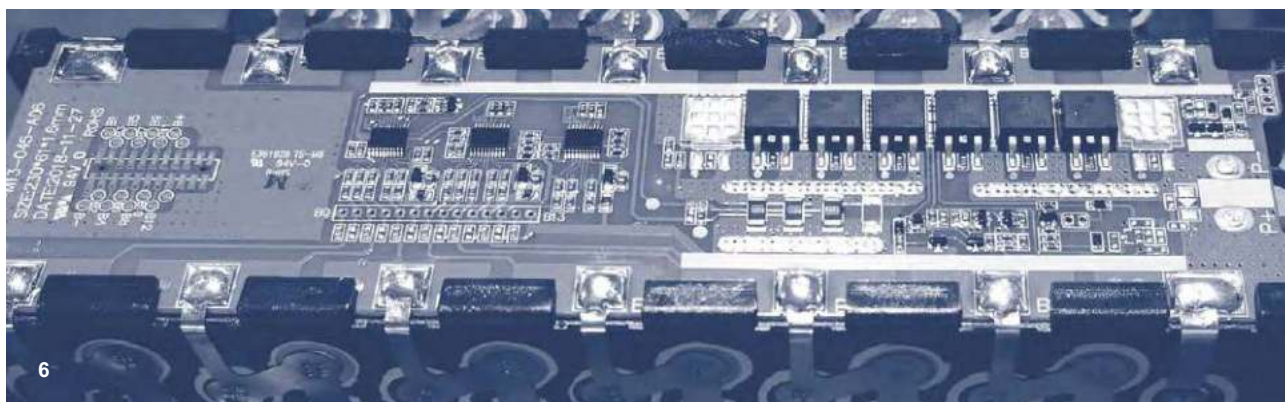
Applications

- Solar & Wind Energy Storage
- UPS
- Data Centers
- Telecommunication
- Electric Power systems
- Electric vehicles
- Emergency Light
- All-purpose

Certifications



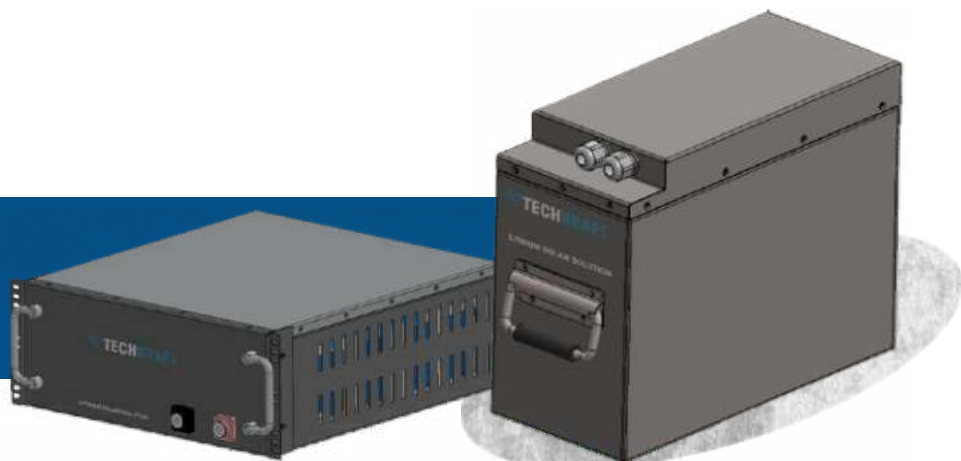
Compliant to: IEC 60896-21:2004



TKP Series

Battery Model	Rated Voltage	Rated Capacity	Discharge Current	Peak Discharge Current	Cut off Discharge Voltage	Charge Voltage	Charge Current	Weight	Dimension LxWxH [mm]
TKP3.2-6	3,2V	6Ah	10A	18A	2.8V	3.65V	1.2A	0,31 kg	47x47x101
TKP6.4-6	6,4V	6Ah	10A	18A	5.6V	7.3V	1.2A	0,45 kg	70x47x96
TKP6.4-12	6,4V	12Ah	20A	36A	5.6V	7.3V	2.4A	0,85 kg	151x50x93
TKP12.8-6	12,8V	6Ah	10A	18A	11.2V	14.6V	1.2A	0,8 kg	151x65x97
TKP12.8-12	12,8V	12Ah	20A	36A	11.2V	14.6V	2.4A	1,35 kg	151x65x97
TKP12.8-18	12,8V	18Ah	20A	54A	11.2V	14.6V	3.6A	2,09 kg	151x99x99
TKP12.8-24	12,8V	24Ah	30A	72A	11.2V	14.6V	4.8A	2,9 kg	181x77x168
TKP12.8-30	12,8V	30Ah	30A	90A	11.2V	14.6V	6A	3,46 kg	181x77x168
TKP12.8-40	12,8V	40Ah	80A	120A	11.2V	14.6V	8A	5,9 kg	198x166x170
TKP12.8-50	12,8V	50Ah	100A	150A	11.2V	14.6V	10A	7,6 kg	198x166x170
TKP12.8-60	12,8V	60Ah	120A	180A	11.2V	14.6V	12A	7,6 kg	198x166x170
TKP12.8-65	12,8V	65Ah	120A	195A	11.2V	14.6V	13A	7,6 kg	198x166x170
TKP12.8-70	12,8V	70Ah	150A	210A	11.2V	14.6V	14A	9 kg	229x138x208
TKP12.8-80	12,8V	80Ah	150A	240A	11.2V	14.6V	16A	10 kg	260x168x209
TKP12.8-90	12,8V	90Ah	150A	270A	11.2V	14.6V	18A	10,6 kg	260x168x209
TKP12.8-100	12,8V	100Ah	200A	300A	11.2V	14.6V	20A	12,5 kg	330x172x215
TKP12.8-120	12,8V	120Ah	200A	360A	11.2V	14.6V	24A	14,3 kg	330x172x215
TKP12.8-135	12,8V	135Ah	200A	405A	11.2V	14.6V	27A	15 kg	330x172x215
TKP12.8-150	12,8V	150Ah	200A	450A	11.2V	14.6V	30A	16 kg	330x172x215
TKP12.8-160	12,8V	160Ah	200A	480A	11.2V	14.6V	32A	18,4 kg	330x172x215

TKP Series



Battery Model	Rated Voltage	Rated Capacity	Discharge Current	Peak Discharge Current	Cut off Discharge Voltage	Charge Voltage	Charge Current	Weight	Dimension LxWxH [mm]
TKP12.8-200	12,8V	200Ah	200A	600A	11.2V	14.6V	40A	21,5 kg	522x240x218
TKP12.8-250	12,8V	250Ah	200A	600A	11.2V	14.6V	50A	28 kg	522x240x218
TKP12.8-300	12,8V	300Ah	200A	600A	11.2V	14.6V	60A	34,7 kg	522x240x218
TKP12.8-400	12,8V	400Ah	200A	600A	11.2V	14.6V	80A	37,5 kg	522x240x218



TKR Series

LiFePO₄ Technology for Storage Power

Applications

- Solar & Wind Energy Storage
- UPS, High-power UPS
- Data Centres
- Telecommunication
- Electric Power systems
- All-purpose

Characteristics

- LiFePO₄ chemistry
- Capacity range: 12Ah to 300Ah
- Voltage range: 12.8V – 51.2V
- Design life: > 15 years, (depending on cycles)
- Cycle life: Up to 3000 Cycles at 100% DOD, 80%EOL, 25°C
- Cell types: Cylindrical / Prismatic
- Parallel connection availability
- Communication interface: RS485/RS232, SNMP
- Self-discharge per month: ≤ 3% at 25°C
- Operation temperature range: – 0°C to + 45°C
- Recommended operation temperature: 25°C
- Safety protection: overvoltage, overcurrent, overcharge, overdischarge, undervoltage, temperature, etc.

BMS

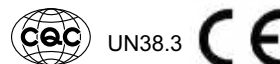
- Software control unit for every individual cell
- Independence of charge/discharge control and protection to maximize system availability.
- Information for voltage, current, temperature, SOH and SOC real time detection.
- LED Screen monitor

Design Features

- Longer cycle life – Up to 15 times longer cycle life and 5 times longer float/calendar life than lead-acid batteries.
- More capacity – Provides up to 100% of usable energy.
- Lightweight – 60% lighter than lead-acid batteries.
- High discharge rate – Ability to fully discharge the battery at a high rate of discharge.
- Fast charging – Charges much faster than conventional sealed lead-acid batteries.
- Long cycle life – Up to 3000 cycles at 100% depth of discharge.
- Intelligent BMS – The battery management system monitors and adapts to battery conditions to maximize performance and safety.



Certifications



Compliant to: IEC 60896-21:2004



TKR Series - Storage Power

Battery Model	Rated Voltage	Rated Capacity	Discharge Current	Peak Discharge Current	Cut off Discharge Voltage	Charge Voltage	Charge Current	Weight	Dimension [LxWxH] mm	Height*
TKR25.6-50	25,6V	50Ah	100A	150A	22,4V	29,2V	10A	23,3 kg	442x480x178	4U
TKR25.6-100	25,6V	100Ah	100A	300A	22,4V	29,2V	20A	26,9 kg	442x480x178	4U
TKR25.6-150	25,6V	150Ah	100A	300A	22,4V	29,2V	30A	39,2 kg	442x480x222	5U
TKR25.6-200	25,6V	200Ah	100A	300A	22,4V	29,2V	40A	46,3 kg	442x480x222	5U
LFR25.6-300	25,6V	300Ah	100A	300A	22,4V	29,2V	60A	68,2 kg	442x480x311	7U
LFR25.6-400	25,6V	400Ah	100A	300A	22,4V	29,2V	80A	88,6 kg	442x480x311	7U
TKR25.6-500	25,6V	500Ah	100A	300A	22,4V	29,2V	100A	111,5 kg	442x650x311	7U
TKR25.6-600	25,6V	600Ah	100A	300A	22,4V	29,2V	100A	125,5 kg	442x650x311	7U
TKR38.4-50	38,4V	50Ah	100A	150A	33,6V	43,8V	10A	24,2 kg	442x480x178	4U
TKR38.4-100	38,4V	100Ah	100A	300A	33,6V	43,8V	20A	35,6 kg	442x480x178	4U
TKR38.4-150	38,4V	150Ah	100A	300A	33,6V	43,8V	30A	54,8 kg	442x480x178	4U
TKR38.4-200	38,4V	200Ah	100A	300A	33,6V	43,8V	40A	68,2 kg	442x480x311	7U
TKR38.4-300	38,4V	300Ah	100A	300A	33,6V	43,8V	60A	97,8 kg	442x480x311	7U
TKR51.2-35	51,2V	35Ah	100A	105A	44,8V	58,4V	7A	22,9 kg	442x480x178	7U
TKR51.2-50	51,2V	50Ah	100A	150A	44,8V	58,4V	10A	28,7 kg	442x480x178	4U
TKR51.2-100	51,2V	100Ah	100A	300A	44,8V	58,4V	20A	46 kg	442x480x222	5U
TKR51.2-150	51,2V	150Ah	100A	300A	44,8V	58,4V	30A	73,5 kg	442x480x311	7U
TKR51.2-200	51,2V	200Ah	100A	300A	44,8V	58,4V	40A	85 kg	442x480x311	7U
TKR51.2-250	51,2V	250Ah	100A	300A	44,8V	58,4V	50A	115 kg	442x650x311	7U
TKR51.2-300	51,2V	300Ah	100A	300A	44,8V	58,4V	60A	125,5 kg	442x650x311	7U

*Rack Unit: 1U = 44.45 mm (EC 60297-3-108:2014)



TKR Series - Storage Power

Battery Model	Rated Voltage	Rated Capacity	Discharge Current	Peak Discharge Current	Cut off Discharge Voltage	Charge Voltage	Charge Current	Weight	Dimension [LxWxH] mm	Height*
TKR12.8-50 C20	12,8V	50Ah	20A	60A	10.8V	14.6V	10A	10 kg	442x421x44.5	1U
TKR12.8-50 C30	12,8V	50Ah	30A	90A	10.8V	14.6V	10A	10 kg	442x421x44.5	1U
TKR12.8-50 C60	12,8V	50Ah	60A	150A	10.8V	14.6V	10A	10 kg	442x421x44.5	1U
TKR12.8-50 C120	12,8V	50Ah	120A	150A	10.8V	14.6V	10A	10 kg	442x421x44.5	1U
TKR12.8-100 C20	12,8V	100Ah	20A	80A	10.8V	14.6V	20A	17 kg	442x421x89	2U
TKR12.8-100 C30	12,8V	100Ah	30A	100A	10.8V	14.6V	20A	17 kg	442x421x89	2U
TKR12.8-100 C60	12,8V	100Ah	60A	180A	10.8V	14.6V	20A	17 kg	442x421x89	2U
TKR12.8-100 C120	12,8V	100Ah	120A	250A	10.8V	14.6V	20A	17 kg	442x421x89	2U
TKR12.8-100 C200	12,8V	100Ah	200A	300A	10.8V	14.6V	20A	17 kg	442x421x89	2U
TKR12.8-150 C20	12,8V	150Ah	20A	80A	10.8V	14.6V	30A	23 kg	442x421x133	3U
TKR12.8-150 C30	12,8V	150Ah	30A	100A	10.8V	14.6V	30A	23 kg	442x421x133	3U
TKR12.8-150 C60	12,8V	150Ah	60A	180A	10.8V	14.6V	30A	23 kg	442x421x133	3U
TKR12.8-150 C120	12,8V	150Ah	120A	250A	10.8V	14.6V	30A	23 kg	442x421x133	3U
TKR12.8-150 C200	12,8V	150Ah	200A	350A	10.8V	14.6V	30A	23 kg	442x421x133	3U
TKR12.8-200 C20	12,8V	200Ah	20A	80A	10.8V	14.6V	40A	27 kg	442x421x178	4U
TKR12.8-200 C30	12,8V	200Ah	30A	100A	10.8V	14.6V	40A	27 kg	442x421x178	4U
TKR12.8-200 C60	12,8V	200Ah	60A	180A	10.8V	14.6V	40A	27 kg	442x421x178	4U
TKR12.8-200 C120	12,8V	200Ah	120A	250A	10.8V	14.6V	40A	27 kg	442x421x178	4U
TKR12.8-200 C200	12,8V	200Ah	200A	350A	10.8V	14.6V	40A	27 kg	442x421x178	4U

TKR Series - Storage Power

Battery Model	Rated Voltage	Rated Capacity	Discharge Current	Peak Discharge Current	Cut off Discharge Voltage	Charge Voltage	Charge Current	Weight	Dimension LxWxH [mm]	Height*
TKR25.6-50 C30	25,6V	50Ah	30A	90A	21.6V	29.2V	10A	14 kg	442x421x89	2U
TKR25.6-50 C50	25,6V	50Ah	50A	150A	21.6V	29.2V	10A	14 kg	442x421x89	2U
TKR25.6-50 C80	25,6V	50Ah	80A	150A	21.6V	29.2V	10A	14 kg	442x421x89	2U
TKR25.6-50 C100	25,6V	50Ah	100A	150A	21.6V	29.2V	10A	14 kg	442x421x89	2U
TKR25.6-50 C150	25,6V	50Ah	150A	150A	21.6V	29.2V	10A	14 kg	442x421x89	2U
TKR25.6-100 C30	25,6V	100Ah	30A	90A	21.6V	29.2V	20A	26 kg	442x421x133	3U
TKR25.6-100 C50	25,6V	100Ah	50A	150A	21.6V	29.2V	20A	26 kg	442x421x133	3U
TKR25.6-100 C80	25,6V	100Ah	80A	200A	21.6V	29.2V	20A	26 kg	442x421x133	3U
TKR25.6-100 C100	25,6V	100Ah	100A	300A	21.6V	29.2V	20A	26 kg	442x421x133	3U
TKR25.6-100 C150	25,6V	100Ah	150A	350A	21.6V	29.2V	20A	26 kg	442x421x133	3U
TKR25.6-100 C200	25,6V	100Ah	200A	450A	21.6V	29.2V	20A	26 kg	442x421x133	3U
TKR25.6-150 C30	25,6V	150Ah	30A	90A	21.6V	29.2V	30A	30 kg	442x421x178	4U
TKR25.6-150 C50	25,6V	150Ah	50A	150A	21.6V	29.2V	30A	30 kg	442x421x178	4U
TKR25.6-150 C80	25,6V	150Ah	80A	200A	21.6V	29.2V	30A	30 kg	442x421x178	4U
TKR25.6-150 C100	25,6V	150Ah	100A	300A	21.6V	29.2V	30A	30 kg	442x421x178	4U
TKR25.6-150 C150	25,6V	150Ah	150A	350A	21.6V	29.2V	30A	30 kg	442x421x178	4U
TKR25.6-150 C200	25,6V	150Ah	200A	450A	21.6V	29.2V	30A	30 kg	442x421x178	4U
TKR25.6-200 C30	25,6V	200Ah	30A	90A	21.6V	29.2V	40A	41 kg	442x421x133	3U
TKR25.6-200 C50	25,6V	200Ah	50A	150A	21.6V	29.2V	40A	41 kg	442x421x133	3U
TKR25.6-200 C80	25,6V	200Ah	80A	200A	21.6V	29.2V	40A	41 kg	442x421x133	3U
TKR25.6-200 C100	25,6V	200Ah	100A	300A	21.6V	29.2V	40A	41 kg	442x421x133	3U
TKR25.6-200 C150	25,6V	200Ah	150A	350A	21.6V	29.2V	40A	41 kg	442x421x133	3U
TKR25.6-200 C200	25,6V	200Ah	200A	450A	21.6V	29.2V	40A	41 kg	442x421x133	3U



TKR Series - Storage Power

Battery Model	Rated Voltage	Rated Capacity	Discharge Current	Peak Discharge Current	Cut off Discharge Voltage	Charge Voltage	Charge Current	Weight	Dimension LxWxH [mm]	Height*
TKR38.4-24 C30	38,4V	24Ah	30A	72A	32.4V	43.8V	4.8A	13kg	442x421x89	2U
TKR38.4-24 C50	38,4V	24Ah	50A	72A	32.4V	43.8V	4.8A	13kg	442x421x89	2U
TKR38.4-30 C30	38,4V	30Ah	30A	90A	32.4V	43.8V	6A	14kg	442x421x89	2U
TKR38.4-30 C50	38,4V	30Ah	50A	90A	32.4V	43.8V	6A	14kg	442x421x89	2U
TKR38.4-40 C30	38,4V	40Ah	30A	90A	32.4V	43.8V	8A	17.5kg	442x421x133	3U
TKR38.4-40 C50	38,4V	40Ah	50A	120A	32.4V	43.8V	8A	17.5kg	442x421x133	3U
TKR38.4-40 C80	38,4V	40Ah	80A	120A	32.4V	43.8V	8A	17.5kg	442x421x133	3U
TKR38.4-50 C30	38,4V	50Ah	30A	90A	32.4V	43.8V	10A	21kg	442x421x133	3U
TKR38.4-50 C50	38,4V	50Ah	50A	150A	32.4V	43.8V	10A	21kg	442x421x133	3U
TKR38.4-50 C80	38,4V	50Ah	80A	150A	32.4V	43.8V	10A	21kg	442x421x133	3U
TKR48-50 C30	48V	50Ah	30A	90A	40.5V	54.6V	10A	25kg	442x421x133	3U
TKR48-50 C50	48V	50Ah	50A	150A	40.5V	54.6V	10A	25kg	442x421x133	3U
TKR48-50 C80	48V	50Ah	80A	150A	40.5V	54.6V	10A	25kg	442x421x133	3U

14 *Rack Unit: 1U = 44.45 mm (EC 60297-3-108:2014)

TKR Series - Storage Power

Battery Model	Rated Voltage	Rated Capacity	Discharge Current	Peak Discharge Current	Cut off Discharge Voltage	Charge Voltage	Charge Current	Weight	Dimension LxWxH [mm]	Height*
TKR48-100 C50	48V	100Ah	50A	150A	40.5V	54.6V	20A	52 kg	442x421x222	5U
TKR48-100 C80	48V	100Ah	80A	240A	40.5V	54.6V	20A	52 kg	442x421x222	5U
TKR48-100 C120	48V	100Ah	120A	300A	40.5V	54.6V	20A	52 kg	442x421x222	5U
TKR48-100 C200	48V	100Ah	200A	450A	40.5V	54.6V	20A	52 kg	442x421x222	5U
TKR48-150 C50	48V	150Ah	50A	150A	40.5V	54.6V	30A	65 kg	442x421x311	7U
TKR48-150 C80	48V	150Ah	80A	240A	40.5V	54.6V	30A	65 kg	442x421x311	7U
TKR48-150 C120	48V	150Ah	120A	300A	40.5V	54.6V	30A	65 kg	442x421x311	7U
TKR48-150 C200	48V	150Ah	200A	450A	40.5V	54.6V	30A	65 kg	442x421x311	7U
TKR48-200 C50	48V	200Ah	50A	150A	40.5V	54.6V	40A	65 kg	442x421x311	7U
TKR48-200 C80	48V	200Ah	80A	240A	40.5V	54.6V	40A	65 kg	442x421x311	7U
TKR48-200 C120	48V	200Ah	120A	300A	40.5V	54.6V	40A	65 kg	442x421x311	7U
TKR48-200 C200	48V	200Ah	200A	450A	40.5V	54.6V	40A	65 kg	442x421x311	7U
TKR48-300 C50	48V	300Ah	50A	150A	40.5V	54.6V	60A	95 kg	442x421x311	7U
TKR48-300 C80	48V	300Ah	80A	240A	40.5V	54.6V	60A	95 kg	442x421x311	7U
TKR48-300 C120	48V	300Ah	120A	300A	40.5V	54.6V	60A	95 kg	442x421x311	7U
TKR48-300 C200	48V	300Ah	200A	450A	40.5V	54.6V	60A	95 kg	442x421x311	7U

*Rack Unit: 1U = 44.45 mm (EC 60297-3-108:2014)





TKR Series

LiFePO₄ Technology for Telecom – Base Station

Applications

- Base Stations
- Telecommunications
- Solar & Wind Energy Storage
- UPS
- Data Centers
- Electric Power systems
- All-purpose

Characteristics

- LiFePO₄ chemistry
- Capacity range: 36Ah to 300Ah
- Voltage range: 51.2V
- Design life: > 15 years, (depending on cycles)
- Cycle life: Up to 3000 Cycles at 100% DOD
- Cell types: Cylindrical / Prismatic
- Parallel connection availability
- Communication interface: RS485/RS232, SNMP
- Self-discharge per month: ≤ 3% at 25°C
- Operation temperature range: – 0°C to + 45°C
- Recommended operation temperature: 25°C
- Safety protection: overvoltage, overcurrent, over-charge, overdischarge, undervoltage, temperature, etc.

BMS

- Software control unit for every individual cell
- Independence of charge/discharge control and protection to maximize system availability.
- Information for voltage, current, temperature, SOH and SOC real time detection.
- LED Screen monitor

Design Features

- Longer cycle life – Up to 15 times longer cycle life and 5 times longer float/calendar life than lead-acid batteries.
- More capacity – Provides up to 100% of usable energy.
- Lightweight – 60% lighter than lead-acid batteries.
- High discharge rate – Ability to fully discharge the battery at a high rate of discharge.
- Fast charging – Charges much faster than conventional sealed lead-acid batteries.
- Long cycle life – Up to 3000 cycles at 100% depth of discharge.
- Intelligent BMS – The battery management system monitors and adapts to battery conditions to maximize performance and safety.



Certifications



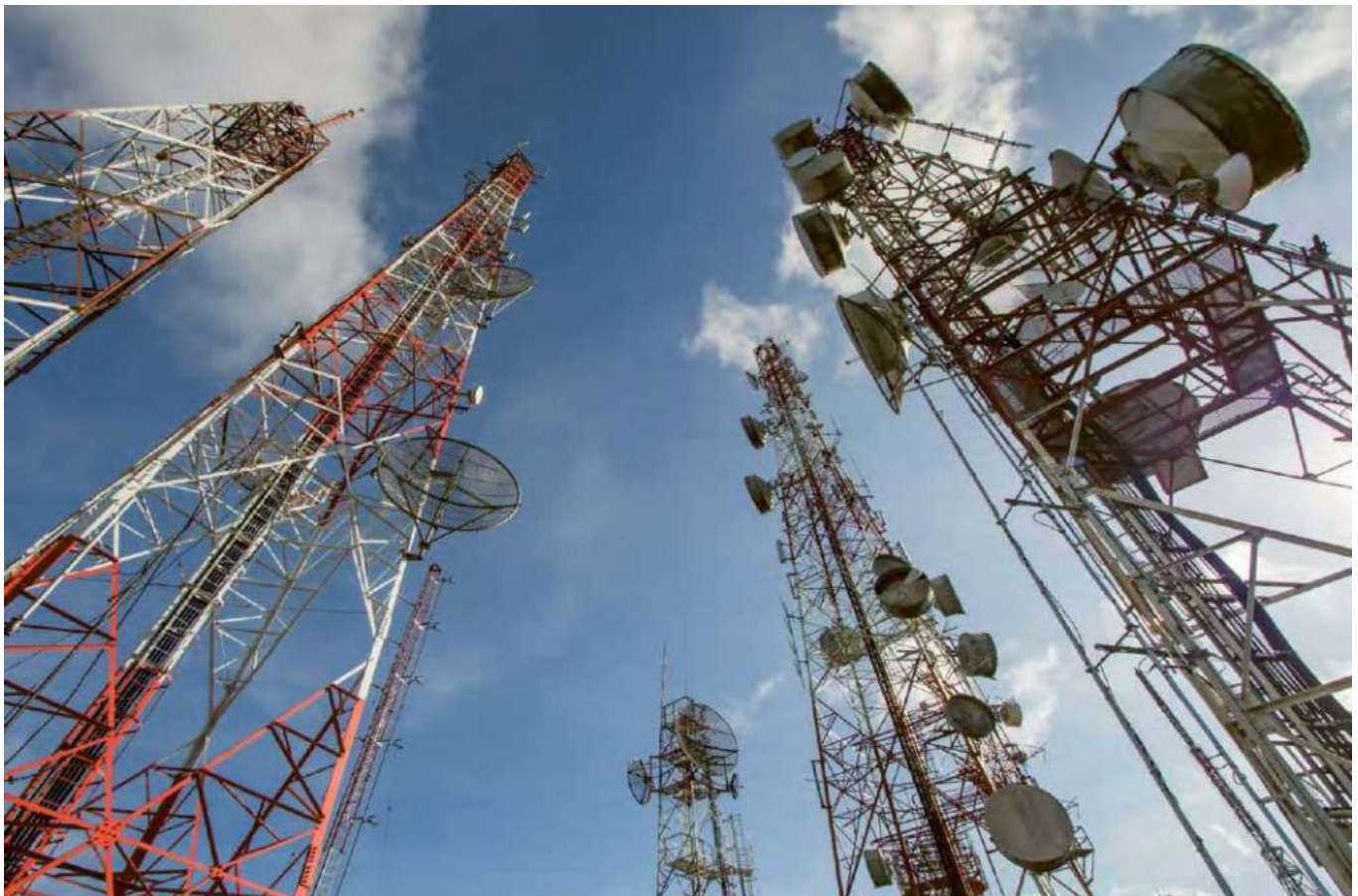
Compliant to: IEC 60896-21:2004



TKR Series - Telecom - Base Station

Battery Model	Rated Voltage	Rated Capacity	Discharge Current	Peak Discharge Current	Cut off Discharge Voltage	Charge Voltage	Charge Current	Weight	Dimenison LxWxH [mm]	Height*
TKR51.2-35	51,2V	35Ah	100A	108A	44,8	58,4	7	22,9 kg	442x480x178	4U
TKR51.2-50	51,2V	50Ah	100A	150A	44,8	58,4	10	28,7 kg	442x480x178	4U
TKR51.2-100	51,2V	100Ah	100A	300A	44,8	58,4	20	46 kg	442x480x222	5U
TKR51.2-150	51,2V	150Ah	100A	300A	44,8	58,4	30	73,5 kg	442x480x311	7U
TKR51.2-200	51,2V	200Ah	100A	300A	44,8	58,4	40	85 kg	442x480x311	7U
TKR51.2-250	51,2V	250Ah	100A	300A	44,8	58,4	50	115 kg	442x650x311	7U
TKR51.2-300	51,2V	300Ah	100A	300A	44,8	58,4	60	125,5 kg	442x650x311	7U

*Rack Unit: 1U = 44.45 mm (EC 60297-3-108:2014)



TKR Series

LiFePO₄ Technology – Cabinet power



Applications

- High-power UPS
- Inverter devices
- Solar & Wind Energy Storage
- Telecommunications
- Rail and Transportation
- Data Centers
- Electric Power systems

Characteristics

- LiFePO₄ chemistry
- DC enclosures/cabinets
- Capacity range: 18Ah to 600Ah
- Voltage range 48V – 384V (408V-512V)
- Design life: > 15 years, (depending on cycles)
- Cycle life: Up to 3000 Cycles at 100% DOD
- Cell types: Cylindrical / Prismatic
- Parallel connection availability
- Communication interface: RS485/RS232, SNMP
- Self-discharge per month: ≤ 3% at 25°C
- Operation temperature range: – 0°C to + 45°C
- Recommended operation temperature: 25°C
- Safety protection: overvoltage, overcurrent, overcharge, overdischarge, undervoltage, temperature, etc.

BMS

- Software control unit for every individual cell
- Independence of charge/discharge control and protection to maximize system availability.
- Information for voltage, current, temperature, SOH and SOC real time detection.
- LED Screen monitor
- Mobile App and remote-control options, multi-language, customizable.

Design Features

- Longer cycle life – Up to 15 times longer cycle life and 5 times longer float/calendar life than lead-acid batteries.
- More capacity – Provides up to 100% of usable energy.
- Lightweight – 60% lighter than lead-acid batteries.
- High discharge rate – Ability to fully discharge the battery at a high rate of discharge.
- Fast charging – Charges much faster than conventional sealed lead-acid batteries.
- Long cycle life – Up to 3000 cycles at 100% depth of discharge.
- Intelligent BMS – The battery management system monitors and adapts to battery conditions to maximize performance and safety.

Certifications



Compliant to: IEC 60896-21:2004



TKR Series - Cabinet Power

Battery Model	Rated Voltage	Rated Capacity	Discharge Current	Peak Discharge Current	Cut off Discharge Voltage	Charge Voltage	Charge Current	Pack Qty [pcs]	Weight	Dimension LxWxH [mm]
TKR96-50	96V	50Ah	100A	150A	84V	110V	10A	2	218 kg	600x600x1200
TKR96-100	96V	100Ah	200A	300A	84V	110V	20A	2	218 kg	600x600x1200
TKR96-150	96V	150Ah	200A	450A	84V	110V	30A	2	218 kg	600x600x1200
TKR96-200	96V	200Ah	200A	600A	84V	110V	40A	2	218 kg	600x600x1200
TKR96-250	96V	250Ah	200A	600A	84V	110V	50A	2	276 kg	600x800x1200
TKR96-300	96V	300Ah	200A	600A	84V	110V	60A	2	303 kg	600x800x1200
TKR96-400	96V	400Ah	200A	600A	84V	110V	80A	2	381 kg	600x800x1500
TKR96-500	96V	500Ah	200A	600A	84V	110V	100A	2	450 kg	600x800x1500
TKR192-18	192V	18Ah	30A	54A	168V	219V	3,6A	4	97 kg	600x600x1200
TKR192-24	192V	24Ah	30A	72A	168V	219V	4,8A	4	107 kg	600x600x1200
TKR192-30	192V	30Ah	60A	90A	168V	219V	6A	4	112 kg	600x600x1200
TKR192-40	192V	40Ah	80A	120A	168V	219V	8A	4	145 kg	600x600x1200
TKR192-50	192V	50Ah	100A	150A	168V	219V	10A	4	158 kg	600x600x1200
TKR192-100	192V	100Ah	200A	300A	168V	219V	20A	4	248 kg	600x600x1500
TKR192-150	192V	150Ah	200A	450A	168V	219V	30A	4	344 kg	600x600x1500
TKR192-200	192V	200Ah	200A	600A	168V	219V	40A	4	386 kg	600x600x1500
TKR192-250	192V	250Ah	200A	600A	168V	219V	50A	4	500 kg	600x800x1500
TKR192-300	192V	300Ah	200A	600A	168V	219V	60A	4	519 kg	600x800x1500
TKR192-400	192V	400Ah	200A	600A	168V	219V	80A	4	662 kg	800x800x1500
TKR240-18	240V	18Ah	36A	54A	210V	274V	3,6A	5	45 kg	600x600x1200
TKR240-24	240V	24Ah	48A	72A	210V	274V	4,8A	5	56 kg	600x600x1200
TKR240-30	240V	30Ah	60A	90A	210V	274V	6A	5	71 kg	600x600x1200
TKR240-40	240V	40Ah	80A	120A	210V	274V	8A	5	149 kg	600x600x1200
TKR240-50	240V	50Ah	100A	150A	210V	274V	10A	5	158 kg	600x600x1200
TKR240-100	240V	100Ah	200A	300A	210V	274V	20A	5	268 kg	600x600x1200
TKR240-150	240V	150Ah	200A	450A	210V	274V	30A	5	430 kg	600x800x1500
TKR240-200	240V	200Ah	200A	600A	210V	274V	40A	5	505 kg	600x600x1800
TKR240-250	240V	250Ah	200A	600A	210V	274V	50A	5	650 kg	600x600x1800
TKR240-300	240V	300Ah	200A	600A	210V	274V	60A	5	778 kg	600x800x1800
TKR240-400	240V	400Ah	200A	600A	210V	274V	80A	5	980 kg	1200x600x1600
TKR384-24	384V	24Ah	48A	60A	336V	438V	4A	8	128 kg	600x600x1200
TKFR384-30	384V	30Ah	60A	90A	336V	438V	6A	8	156 kg	600x600x1200
TKR384-50	384V	50Ah	100A	150A	336V	438V	10A	8	238 kg	600x600x1200
TKR384-100	384V	100Ah	200A	300A	336V	438V	20A	8	566 kg	600x600x1500x2
TKR384-150	384V	150Ah	200A	450A	336V	438V	30A	8	686 kg	600x800x1800
TKR384-200	384V	200Ah	200A	600A	336V	438V	40A	8	792 kg	600x600x1500x2
TKR384-300	384V	300Ah	200A	600A	336V	438V	60A	8	1118 kg	1200x600x1600
TKR384-400	384V	400Ah	200A	600A	336V	438V	80A	8	1395 kg	1200x600x1600
TKR384-500	384V	500Ah	200A	600A	336V	438V	100A	8	1680 kg	1200x600x1800
TKR384-600	384V	600Ah	200A	600A	336V	438V	120A	8	2006 kg	1200x800x1800

TKC Series

LiFePO₄ Technology – E-Vehicles



Applications

- Electrically Propelled Vehicles
- Energy Storage

Characteristics

- LiFePO₄ chemistry
- Capacity range: 12Ah to 70Ah
- Voltage range 48V – 76.8V
- Design life: > 15 years, (depending on cycles)
- Cycle life: Up to 3000 Cycles at 100% DOD
- Cell types: Cylindrical / Prismatic
- Parallel connection availability
- Communication interface: RS485/RS232, SNMP
- Self-discharge per month: ≤ 3% at 25°C
- Operation temperature range: – 0°C to + 45°C
- Recommended operation temperature: 25°C
- Safety protection: overvoltage, overcurrent, overcharge, overdischarge, undervoltage, temperature, etc.

BMS

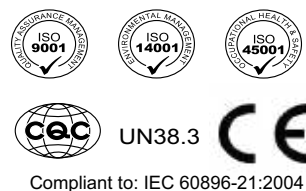
- Software control unit for every individual cell
- Independence of charge/discharge control and protection to maximize system availability.
- Information for voltage, current, temperature, SOH and SOC real time detection.
- LED Screen monitor (some models)

Design Features

- Longer cycle life: Up to 15 times longer cycle life and 5 times longer float/calendar life than lead-acid batteries.
- More capacity – Provides up to 100% of usable energy.
- Lightweight – 60% lighter than lead-acid batteries.
- High discharge rate – Ability to fully discharge the battery at a high rate of discharge.
- Fast charging – Charges much faster than conventional sealed lead-acid batteries.
- Long cycle life – Up to 3000 cycles at 100% depth of discharge.
- Intelligent BMS – The battery management system monitors and adapts to battery conditions to maximize performance and safety.



Certifications



TKC Series - E-Vehicles

Battery Model	Rated Voltage	Rated Capacity	Discharge Current	Peak Discharge Current	Cut off Discharge Voltage	Charge Voltage	Charge Current	Weight	Dimension LxWxH [mm]
TKC48-24 C20	48V	24Ah	20A	60A	42V	54,7V	4,8A	11,5 kg	215x183x165
TKC48-24 C30	48V	24Ah	30A	60A	42V	54,7V	4,8A	11,5 kg	215x183x165
TKC48-24 C45	48V	24Ah	45A	60A	42V	54,7V	4,8A	11,5 kg	215x183x165
TKC48-30 C45	48V	30Ah	45A	90A	42V	54,7V	6A	14,0 kg	280x183x165
TKC48-40 C60	48V	40Ah	60A	120A	42V	54,7V	8A	19,0 kg	270x235x175
TKC48-50 C60	48V	50Ah	60A	150A	42V	54,7V	10A	23,8 kg	300x235x175
TKC48-60 C60	48V	60Ah	60A	180A	42V	54,7V	12A	26,0 kg	370x235x175
TKC60.8-24 C30	60,8V	24Ah	30A	60A	53V	69V	4,8A	14,5 kg	310x183x165
TKC60.8-24 C60	60,8V	24Ah	60A	60A	53V	69V	4,8A	14,5 kg	310x183x165
TKC60.8-30 C30	60,8V	30Ah	30A	90A	53V	69V	6A	17,5 kg	350x183x165
TKC60.8-30 C60	60,8V	30Ah	60A	90A	53V	69V	6A	17,5 kg	350x183x165
TKC60.8-40 C60	60,8V	40Ah	60A	120A	53V	69V	8A	24,0 kg	310x205x240
TKC60.8-50 C60	60,8V	50Ah	60A	150A	53V	69V	10A	30,0 kg	380x215x225
TKC60.8-60 C60	60,8V	60Ah	60A	180A	53V	69V	12A	33,0 kg	380x215x270
TKC60.8-70 C60	60,8V	70Ah	60A	180A	53V	69V	14A	40,5 kg	365x235x270
TKC60.8-80 C60	60,8V	80Ah	60A	180A	53V	69V	16A	47,5 kg	560x310x200
TKC73.6-24 C30	73,6V	24Ah	30A	60A	64V	84V	4,8A	16,8 kg	280x215x165
TKC73.6-24 C60	73,6V	24Ah	60A	60A	64V	84V	4,8A	16,8 kg	280x215x165
TKC73.6-30 C30	73,6V	30Ah	30A	90A	64V	84V	6A	20,5 kg	345x215x165
TKC73.6-30 C60	73,6V	30Ah	60A	90A	64V	84V	6A	20,5 kg	345x215x165
TKC73.6-40 C60	73,6V	40Ah	60A	120A	64V	84V	8A	27,6 kg	375x230x180
TKC73.6-50 C60	73,6V	50Ah	60A	150A	64V	84V	10A	34,8 kg	340x230x270
TKC73.6-60	73,6V	60Ah	60A	180A	64V	84V	12A	38,5 kg	365x235x270
TKC73.6-70	73,6V	70Ah	80A	210A	64V	84V	12A	48,5 kg	520x340x160
TKC73.6-80	73,6V	80Ah	60A	180A	64V	84V	12A	48,5 kg	235x310x430
TKC64-24	64V	24Ah	30A	60A	56V	73V	4,8A	15,5 kg	310x183x165
TKC64-24	64V	24Ah	60A	60A	56V	73V	4,8A	15,5 kg	310x183x165
TKC64-30	64V	30Ah	30A	90A	56V	73V	6A	18,5 kg	350x183x165
TK64-30	64V	30Ah	60A	90A	56V	73V	6A	18,5 kg	350x183x165
TKC64-40	64V	40Ah	60A	120A	56V	73V	8A	25 kg	310x205x240
TKC64-50	64V	50Ah	60A	150A	56V	73V	10A	31,2 kg	380x215x225
TKC64-60	64V	60Ah	60A	180A	56V	73V	12A	34,5 kg	380x215x270
TKC64-70	64V	70Ah	60A	180A	56V	73V	14A	40,5 kg	365x235x270
TKC64-80	64V	80Ah	60A	180A	56V	73V	16A	47,5 kg	560x310x200
TKC76.8-24	76,8V	24Ah	30A	60A	67V	87,6V	4,8A	16,8 kg	280x215x165
TKC76.8-24	76,8V	24Ah	50A	60A	67V	87,6V	4,8A	16,8 kg	280x215x165
TKC76.8-30	76,8V	30Ah	30A	90A	67V	87,6V	6A	21 kg	345x215x165
TKC76.8-30	76,8V	30Ah	50A	90A	67V	87,6V	6A	21 kg	345x215x165
TKC76.8-40	76,8V	40Ah	50A	120A	67V	87,6V	8A	28,2 kg	300x230x240
TKC76.8-50	76,8V	50Ah	50A	150A	67V	87,6V	10A	35,9 kg	365x230x270
TKC76.8-60	76,8V	60Ah	50A	150A	67V	87,6V	12A	40 kg	365x230x270
TKC76.8-70	76,8V	70Ah	80A	210A	67V	87,6V	14A	48,5 kg	520x340x160

TKC Series

LiFePO₄ Technology – OEM Pack



Applications

- Power Backup Systems
- Solar & Wind Energy Storage

Characteristics

- Highly customizable
- LiFePO₄ chemistry
- Capacity range: 12Ah to 70Ah
- Voltage range 3.2V – 76.8V
- Design life: > 15 years, (depending on cycles)
- Cycle life: Up to 3000 Cycles at 100% DOD
- Cell types: Cylindrical / Prismatic
- Self-discharge per month: ≤ 3% at 25°C
- Operation temperature range: – 0°C to + 45°C
- Recommended operation temperature: 25°C
- Safety protection: overvoltage, overcurrent, overcharge, overdischarge, undervoltage, temperature, etc.

BMS

- High-precision Master/Slave monitoring system
- Safety protection: overvoltage, overcurrent, overcharge, overdischarge, undervoltage, temperature, etc.

Certifications



Compliant to: IEC 60896-21:2004

Design Features

- Longer cycle life: Up to 15 times longer cycle life and 5 times longer float/calendar life than lead-acid batteries.
- More capacity – Provides up to 100% of usable energy.
- Lightweight – 60% lighter than lead-acid batteries.
- High discharge rate – Ability to fully discharge the battery at a high rate of discharge.
- Fast charging – Charges much faster than conventional sealed lead-acid batteries.
- Long cycle life – Up to 3000 cycles at 100% depth of discharge.
- Intelligent BMS – The battery management system monitors and adapts to battery conditions to maximize performance and safety.



TKC Series - OEM Pack

Battery Model	Rated Voltage	Rated Capacity	Discharge Current	Peak Discharge Current	Cut off Discharge Voltage	Charge Voltage	Charge Current	Weight	Dimension LxWxH [mm]
TKC12.8-12	12,8V	12Ah	20A	30A	11,2V	14,6V	2,4A	1,17 kg	140x70x80
TKC12.8-18	12,8V	18Ah	36A	54A	11,2V	14,6V	3,6A	2,34 kg	140x135x80
TKC12.8-24	12,8V	24Ah	40A	60A	11,2V	14,6V	4,8A	2,34 kg	140x135x80
TKC12.8-30	12,8V	30Ah	60A	90A	11,2V	14,6V	6A	4,09 kg	200x140x80
TKC12.8-35	12,8V	35Ah	70A	105A	11,2V	14,6V	7A	4,67 kg	235x140x80
TKC12.8-40	12,8V	40Ah	80A	120A	11,2V	14,6V	8A	5,26 kg	270x140x80
TKC12.8-45	12,8V	45Ah	90A	135A	11,2V	14,6V	9A	5,84 kg	270x180x80
TKC12.8-50	12,8V	50Ah	100A	150A	11,2V	14,6V	10A	6,42 kg	320x140x100
TKC12.8-60	12,8V	60Ah	120A	180A	11,2V	14,6V	12A	7,31 kg	270x210x80
TKC12.8-80	12,8V	80Ah	160A	240A	11,2V	14,6V	16A	9,64 kg	200x175x150
TKC25.6-12	25,6V	12Ah	20A	30A	22,4V	29,2V	2,4A	2,34 kg	140x135x80
TKC25.6-18	25,6V	18Ah	30A	45A	22,4V	29,2V	3,6A	3,50 kg	200x140x80
TKC25.6-24	25,6V	24Ah	40A	60A	22,4V	29,2V	4,8A	4,67 kg	270x140x80
TKC25.6-30	25,6V	30Ah	60A	90A	22,4V	29,2V	6A	8,18 kg	270x200x80
TKC25.6-35	25,6V	35Ah	70A	105A	22,4V	29,2V	7A	9,34 kg	270x240x80
TKC25.6-40	25,6V	40Ah	80A	120A	22,4V	29,2V	8A	10,51 kg	270x270x80
TKC25.6-50	25,6V	50Ah	100A	150A	22,4V	29,2V	10A	12,85 kg	330x270x80



TKC Series

NCM (LiNiMnCoO₂) Technology – Solar Street Light

Applications

- Solar Street Light

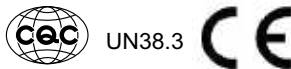
Characteristics

- Highly customizable
- LiNiMnCoO₂ chemistry
- Capacity range: 8Ah to 60Ah
- Voltage range 11.1V
- Design life: > 15 years, (depending on cycles)
- Cell types: Cylindrical/Prismatic/Pouch Cell
- Self-discharge per month: ≤ 3% at 25°C
- Operation temperature range: – 0°C to + 45°C
- Recommended operation temperature: 25°C
- Safety protection: overvoltage, overcurrent, overcharge, over-discharge, undervoltage, temperature, etc.

BMS

- High-precision monitoring system
- Safety protection: overvoltage, overcurrent, overcharge, overdischarge, undervoltage, temperature, etc.

Certifications



Compliant to: IEC 60896-21:2004

Design Features

- Longer cycle life: Up to 15 times longer cycle life and 5 times longer float/calendar life than lead-acid batteries.
- More capacity – Provides up to 100% of usable energy.
- Lightweight – 60% lighter than lead-acid batteries.
- High discharge rate – Ability to fully discharge the battery at a high rate of discharge.
- Fast charging – Charges much faster than conventional sealed lead-acid batteries.
- Intelligent BMS – The battery management system monitors and adapts to battery conditions to maximize performance and safety.





CORPORATE OFFICE

2F-CS-037
ANSAL PLAZA VAISHALI,
GHAZIABAD, UP INDIA.

Phone: +91-120-4180914
Mobile: +91 9958600424

OVERSEAS OFFICE

A2, 1FZA Business Park,
Dubai Silicon Oasis,
Dubai UAE
Mobile : +971-542993175

18 Carter street,
Lagos,
Nigeria